



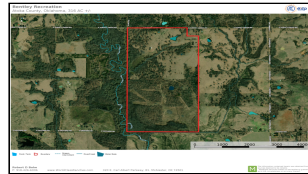
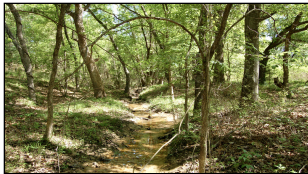
WorldClassRanches.com  
Your Brand for Ranch & Trophy Properties

# World Class Ranches Team Brokered by EXP Realty

320 E. Carl Albert Parkway, B1 | McAlester, OK 74501

**Bentley Recreation 316**

**\$1,106,000.00**



Need a place to getaway? Look no further. 316 acres located in the quiet small community of Bentley, Oklahoma. The property has been used primarily for hunting. There are established food plots strategically scattered throughout the property. Several large whitetail deer have been harvested. There are plenty of turkeys, bobcats, hogs, and other wildlife that call this land home. Don't enjoy hunting? That's okay because this property has so much to offer. You will have a blast riding 4-wheelers and ATVs or horses around. The land has just the right amount of elevation change and trails for riding. There are 4 ponds throughout and a seasonal creek that runs through the property. 2 of the ponds are stocked with fish. The metal building has been framed to be a small cabin. It could easily be finished into a nice hunting cabin. There is a roll-up door to park your ATVs or truck and store all your hunting gear. If you are looking to build a house you will love the scenic view from the top of the hill. Water and power are at the county road. There is a perimeter fence, allowing you to have a few horses and around 15-20 animal units. Thinking about a place to

## Property Highlights

**Price Per Acre:** 3,500

**Acreage:** 316

**Location:** E. Turkey Creek Rd, Atoka, OK 74525

**Closest Town:** Atoka

**Access:** County Road

**Taxes:** \$297.00

**Topography:** Elevation change

**Improvements:** Metal building

**Water:** 4 ponds, seasonal creek

**Wildlife:** White-tail deer, hogs, turkey, bobcats

**Utilities:** Water and power on Turkey Creek Rd.

The information above is from sources deemed reliable, but no warranty or representation is as to its accuracy by the Seller and WCR Land Brokers Marketing Network, LLC (WCR LBMN) and affiliated Brokers. Seller and WCR LBMN expressly disclaim any liability for errors, omissions or changes regarding any information provided for this property. Grass production and carrying capacity vary according to management practices. Water availability will vary by climatic conditions. Surface and Ground water usage may need State Permits. All maps are for illustration only. All offerings, pricing, and information are subject to change at anytime. Copyright 2005-2025 All Rights Reserved

**Kelly Albrecht**

World Class Ranches Team Brokered by  
EXP Realty

**580-380-2066**