



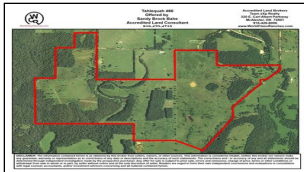
WorldClassRanches.com
Your Brand for Ranch & Trophy Properties

World Class Ranches Team Brokered by EXP Realty

320 E. Carl Albert Parkway, B1 | McAlester, OK 74501

Tahlequah Ranch 466-SKB

\$1,281,500.00



This 466 acre ranch is covered in Bermuda Grass, Korea Lespedeza, Clovers, native grasses and some Fescue. This combination contains grasses that start early and remain late into the growing season. Eight ponds supply abundant water for the livestock and wildlife. Cross-fencing allows for rotational grazing. Access via a county road along part of the east boundary and on the north side of the property makes it easy to get trucks, trailers and haying equipment onto the property. This is not only a productive ranch, but also a very aesthetically appealing property with gently rolling terrain and views of the surrounding foot hills. There is enough forrested area to attract and provide cover for deer, turkey and other indeginous wildlife. Electricity is available at the road frontage. Homes in the area utilize well water. Call Sandy Brock Bahe at 918-470-4710 or Toll Free at 844-WCR-LAND.

Property Highlights

Price Per Acre: 2,750.00

Acreage: 466 Acres

Location: 1.75 hrs. SE of
Tulsa, OK

Closest Town: Tahlequah, OK

Taxes: \$511.82/year

Topography: Very gently
rolling to hilly

Improvements: Fencing,
ponds

Forage: Bermuda grass,
Korean Lespedeza, native

Capacity: 80 to 100 pair

Water: Ponds, seasonal stream

Wildlife: Whitetail deer,
turkey, dove, squirrels, other

Utilites: Electricity available

The information above is from sources deemed reliable, but no warranty or representation is as to its accuracy by the Seller and WCR Land Brokers Marketing Network, LLC (WCR LBMN) and affiliated Brokers. Seller and WCR LBMN expressly disclaim any liability for errors, omissions or changes regarding any information provided for this property. Grass production and carrying capacity vary according to management practices. Water availability will vary by climatic conditions. Surface and Ground water usage may need State Permits. All maps are for illustration only. All offerings, pricing, and information are subject to change at anytime. Copyright 2005-2025 All Rights Reserved

Sandy Brock Bahe
World Class Ranches Team Brokered by
EXP Realty
918-470-4710