



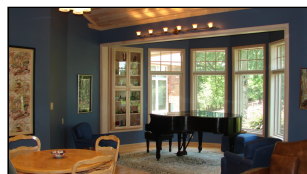
WorldClassRanches.com
Your Brand for Ranch & Trophy Properties

World Class Ranches Team Brokered by EXP Realty

320 E. Carl Albert Parkway, B1 | McAlester, OK 74501

Mud Creek Ranch 118-skb

\$799,000.00



One amazing ranch! Sited within 15 minutes of McAlester, OK, on a paved county road, this ranch features a 5051 sq. ft. custom home, horse barn with four stalls, hay/equipment barn with 14' sheds on three sides, riding arena, a really nice creek and 2 ponds. The home was constructed in 2002 with extraordinary detailing in the woodwork, and trim. It sports four bedrooms, four bathrooms, two living areas, and an upstairs sitting/game area. The oversized four car garage also includes two large shop/storage rooms. The home features granite countertops, a 2 dishwasher kitchen, butler pantry, three foot solid wood doors, vaulted and tongue & groove trayed ceilings, walkin closets, and lots of extra storage. Over 88 acres of the ranch is rated by NRCS at 6000+ pounds of forage per acre per year for a normal year. The land is fenced and cross-fenced. It also has just enough mature tree coverage for the livestock and to allow travel paths for the wildlife along the creek and back of the property. **ADDITIONAL PICTURES COMING SOON!** Call Sandy Brock Bahe at 918-470-4710 or Henry Lehr at 918-470-8810 with questions or to view.

Property Highlights

Acreage: 118 Acres

Location: 1.45 hrs S of Tulsa, OK, 3 hrs. N of Dallas

Closest Town: McAlester, OK

Access: Paved county road

Taxes: \$2,800/year

Topography: Flat meadows, elevated home site

Improvements: Custom home, barn, horse barn, fencing, ponds

Home Sqft: 5051

Bedrooms: 4

Baths: 4

Forage: Bermuda Grass, and native grasses

Water: 1 pond, Mud creek

Wildlife: Whitetail, squirrels, turkey, dove, and other

Utilites: Rural water, Electric, septic system, propane tank

The information above is from sources deemed reliable, but no warranty or representation is as to its accuracy by the Seller and WCR Land Brokers Marketing Network, LLC (WCR LBMN) and affiliated Brokers. Seller and WCR LBMN expressly disclaim any liability for errors, omissions or changes regarding any information provided for this property. Grass production and carrying capacity vary according to management practices. Water availability will vary by climatic conditions. Surface and Ground water usage may need State Permits. All maps are for illustration only. All offerings, pricing, and information are subject to change at anytime. Copyright 2005-2025 All Rights Reserved

Henry Lehr

World Class Ranches Team Brokered by
EXP Realty

918-470-8810