



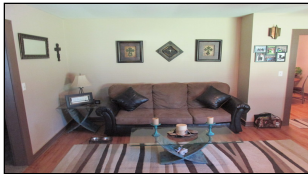
WorldClassRanches.com
Your Brand for Ranch & Trophy Properties

World Class Ranches Team Brokered by EXP Realty

320 E. Carl Albert Parkway, B1 | McAlester, OK 74501

Twin Oaks Lakeview Cottage 7-jc

\$89,900.00



This very well maintained little home sits on 7 pretty acres between the towns of McAlester and Haileyville. Exterior features of the home include vinyl siding, a metal roof, a 12'x20' carport, and a 30'x50' barn. The fenced back yard has a covered back porch, mature trees, and a unique 100 year old fireplace that has been converted into a grill. The interior of the home has been updated and beautifully decorated, the kitchen has been opened up to include the dining room and a small study. The living area features beautiful, original hardwood floors and a wood burning stove. The bathroom has been updated with knotty pine paneling and a custom made counter top. The acreage lies between highway 270 and a four acre lake, offering easy access and a wonderful view from the large back yard. The 30'x50' barn is in good shape and ready to be that extra-large shop you've always wanted or shelter for the livestock. Give Joel a call and have a look at this one of a kind, pretty little place that could be your new home!

Property Highlights

Acreage: 7 Acres m/l

Location: 2 hrs SE of OKC, 1 1/2 hrs S of Tulsa.

Closest Town: McAlester, OK 74501

Access: HWY 270, 9 Miles East of McAlester

Taxes: \$\$680.00 (est.)

Topography: Flat to Gently Sloping with a small creek bed

Improvements: Home, Barn, Carport, Dock.

Home Sqft: 1205

Bedrooms: 2

Baths: 1

Forage: Native grass mix

Water: Seasonal creek

Wildlife: Deer, turkey, geese, ducks and other native species

Utilities: Rural water and electric, access to natural gas

Development Potential
Excellent, highway frontage the length of the property

The information above is from sources deemed reliable, but no warranty or representation is as to its accuracy by the Seller and WCR Land Brokers Marketing Network, LLC (WCR LBMN) and affiliated Brokers. Seller and WCR LBMN expressly disclaim any liability for errors, omissions or changes regarding any information provided for this property. Grass production and carrying capacity vary according to management practices. Water availability will vary by climatic conditions. Surface and Ground water usage may need State Permits. All maps are for illustration only. All offerings, pricing, and information are subject to change at anytime. Copyright 2005-2025 All Rights Reserved

Joel Chisum

World Class Ranches Team Brokered by
EXP Realty

918-370-0157