

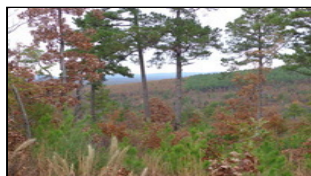
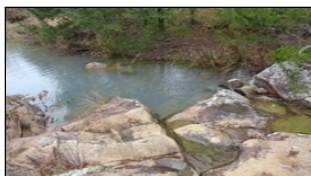


WorldClassRanches.com
Your Brand for Ranch & Trophy Properties

|,

LeFlore 480 - tsl

\$



Property Description: Leflore 480 480 acres of Majestic Mountain Views that are so Private and Peaceful. Live running water and tall whispering pines are waiting to be explored. This is a spectacular tract of land for that hunter or recreational mindset to enjoy for a lifetime of great country living. The elevation changes are very amazing. There is so many possibilities with this land. Just a few miles out of Leflore, Oklahoma, and accessible from Leflore, or Highway 271. Talimena Scenic Drive is very near by, and Wister Lake is close to this property as well. Deer, Bear, and Turkey are abundant and so many great trees standing tall. Hardwoods, and Pines are everywhere. Poteau is very near by, and Ft Smith, Arkansas is within an hours drive. Call Tonya Laney at 918-470-5373.

Property Highlights

Acreage: 480 acres

The information above is from sources deemed reliable, but no warranty or representation is as to its accuracy by the Seller and WCR Land Brokers Marketing Network, LLC (WCR LBMN) and affiliated Brokers. Seller and WCR LBMN expressly disclaim any liability for errors, omissions or changes regarding any information provided for this property. Grass production and carrying capacity vary according to management practices. Water availability will vary by climatic conditions. Surface and Ground water usage may need State Permits. All maps are for illustration only. All offerings, pricing, and information are subject to change at anytime. Copyright 2005-2024 All Rights Reserved