



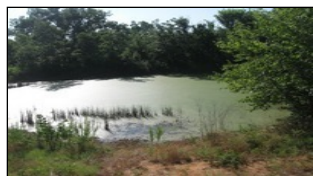
WorldClassRanches.com
Your Brand for Ranch & Trophy Properties

World Class Ranches Team Brokered by EXP Realty

320 E. Carl Albert Parkway, B1 | McAlester, OK 74501

Coon Creek Ranchette 50 -ka

\$229,000.00



Property Highlights

Acreage: 50 Acres

Location: East of
Wapanucka, OK.

NAME OF PROPERTY: Coon Creek Ranchette 50 - ka ACREAGE: 50 Acres
LOCATION: 110 N. Birch Creek Wapanucka, OK. 73461 – Located minutes from Atoka or Wapanucka, OK. 2 hours to either Oklahoma City, or Dallas TX.
ACCESS: County Road TAXES: Approximately \$1,728.92 Per Year
TOPOGRAPHY: Flat to Gently Rolling IMPROVEMENTS: Nice Metal Home, 2 Storage Sheds, Fence FORAGE: Currently harvesting watermelons & cantaloupes.
WATER: 2 Ponds & Creek WILDLIFE: Whitetail deer, Turkey, Hogs UTILITIES: Electricity, Gas, Rural Water, Septic System COMMENTS: It is not easy to find a clean & comfortable home in this area, with 50 acres! 3 bed, 2 bath 2300 sq. ft. metal home was finished less than 3 years ago. Living room, kitchen, and dining room are all open and spacious with cathedral ceiling. Kitchen is large with plenty of counter space, stainless steel appliances, large window over the sink, tiled back splash and plenty of cabinet space. The utility room is more than just that, it is also used as a large kitchen pantry. Floors throughout are all stained concrete. Huge master suite with walk in closet. Master bath has two separate vanities, jetted tub, and tiled shower. Additional bedrooms are good sized with large walk-in closets. Central heat & air. Your children or grandchildren will absolutely love playing in this yard! There is a darling play house that could also be used for storage. A nice size back porch you will

The information above is from sources deemed reliable, but no warranty or representation is as to its accuracy by the Seller and WCR Land Brokers Marketing Network, LLC (WCR LBMN) and affiliated Brokers. Seller and WCR LBMN expressly disclaim any liability for errors, omissions or changes regarding any information provided for this property. Grass production and carrying capacity vary according to management practices. Water availability will vary by climatic conditions. Surface and Ground water usage may need State Permits. All maps are for illustration only. All offerings, pricing, and information are subject to change at anytime. Copyright 2005-2025 All Rights Reserved

Kelly Albrecht
World Class Ranches Team Brokered by
EXP Realty
580-380-2066