



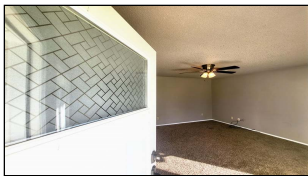
WorldClassRanches.com  
Your Brand for Ranch & Trophy Properties

# World Class Ranches Team Brokered by EXP Realty

320 E. Carl Albert Parkway, B1 | McAlester, OK 74501

**On the corner of 9th & F Street -MP**

**\$120,000.00**



A clean 1144 square foot home with 3 bedrooms and 1 bath on a 2 lot corner location. This home features a large fenced in yard and open areas with room to expand the home, build a shop, and house an RV or boat plus additional parking! Located in Stigler, means that you can go in either direction for 30 minutes or less to find world class fishing and boating on Lake Eufaula or Kerr Lake. 30 minutes north is I-40 that will take you west 2.5 hours to Oklahoma City or head north 1.5 hours to Tulsa, Oklahoma. Dallas, Texas is just 4 hours south. In a quiet tight knit very active community with 1 hour access in any direction to the bigger cities of McAlester and Muskogee, Oklahoma as well as Forth Smith, Arkansas. Inside this cute cozy brick home you will find all new carpet, paint, window treatments, appliances, and lighting, and plenty of storage throughout. The enclosed remodeled garage features a walk in closet that can serve as a great master bedroom or bonus room with the capability to easily add a bathroom to make this a master suite!! This home is move in ready NOW and ready for it's new owners. But it would also make a great rental investment property!! Give Melanie Pennebaker a call TODAY before this one is GOING...GOING...GONE!! It will not last long!!! 918-448-2001

## Property Highlights

**Acreage:** 2 lots

**Location:** 1.5 hour south of Tulsa 2.5 hours east of OKC

**Closest Town:** Stigler

**Access:** Hwy 9 & NW 9th Street

**Taxes:** \$377.59

**Topography:** in town property

**Improvements:** New paint, flooring, window treatments...

**Bedrooms:** 3

**Baths:** 1

**Utilites:** city water & utilites

**Development Potential** great rental investment property!!

The information above is from sources deemed reliable, but no warranty or representation is as to its accuracy by the Seller and WCR Land Brokers Marketing Network, LLC (WCR LBMN) and affiliated Brokers. Seller and WCR LBMN expressly disclaim any liability for errors, omissions or changes regarding any information provided for this property. Grass production and carrying capacity vary according to management practices. Water availability will vary by climatic conditions. Surface and Ground water usage may need State Permits. All maps are for illustration only. All offerings, pricing, and information are subject to change at anytime. Copyright 2005-2026 All Rights Reserved

**Melanie Pennebaker**  
World Class Ranches Team Brokered by  
EXP Realty  
**918-413-8319**