



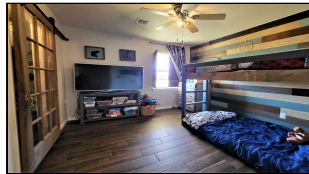
WorldClassRanches.com
Your Brand for Ranch & Trophy Properties

World Class Ranches Team Brokered by EXP Realty

320 E. Carl Albert Parkway, B1 | McAlester, OK 74501

Whitefield Roll N Ridge estate home-MP

\$130,000.00



Located on a large lot in a quiet cul-de-sac in Roll N Ridge estates in Whitefield, Ok. This 1215 sq. ft. recently remodeled home has 3 bedrooms, 2 baths, and a single car garage that currently houses a fishing boat! There is also a new 30x12 storage shed. This home was built in 2005 but has had many recent upgrades that include: a new metal roof, new a/c unit, porcelain tile wood flooring through the main areas and bedrooms, tile in the kitchen, and ceramic tile in master bathroom. There are numerous unique custom wooden accent walls, built in wooden accessories like towel racks, and even custom built in wooden bunk beds, which can be removed in needed. The home has large closets, a beautiful new front door, a closet french sliding door, and a newer speed queen washer and dryer. In fact, all appliances are included. There is also a neighboring lot available for sale if you would like to expand this property! This clean home is located in a small, quiet, one stop sign town with Whitefield school, dollar general, the post office, and gas stations just around the corner. Stigler is just 5-10 mins away with all other conveniences. This neighborhood has recently had several homes sold, upgraded, expanded, and remodeled, which makes this a sought after neighborhood. This home won't last long!! Give Melanie Pennebaker a call today for a showing @ 918-448-2001

Property Highlights

Acreage: 1 lot

Location: 2.5 hrs east of OKC, 1.5 hrs south of Tulsa

Closest Town: Whitefield

Access: Hwy 9 & Hwy 2

Taxes: \$725.23

Topography: Flat

Improvements: New roof, a/c, floors, 30x12 storage shed

Bedrooms: 3

Baths: 2

Utilites: city water & utilites

Development Potential
rapidly improving
neighborhood subdivision

The information above is from sources deemed reliable, but no warranty or representation is as to its accuracy by the Seller and WCR Land Brokers Marketing Network, LLC (WCR LBMN) and affiliated Brokers. Seller and WCR LBMN expressly disclaim any liability for errors, omissions or changes regarding any information provided for this property. Grass production and carrying capacity vary according to management practices. Water availability will vary by climatic conditions. Surface and Ground water usage may need State Permits. All maps are for illustration only. All offerings, pricing, and information are subject to change at anytime. Copyright 2005-2025 All Rights Reserved

Melanie Pennebaker
World Class Ranches Team Brokered by
EXP Realty
918-413-8319