



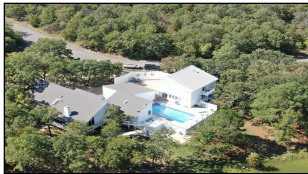
WorldClassRanches.com  
Your Brand for Ranch & Trophy Properties

# World Class Ranches Team Brokered by EXP Realty

320 E. Carl Albert Parkway, B1 | McAlester, OK 74501

**172 Wayside, McAlester**

**\$1,100,000.00**



This Frank Lloyd Wright inspired masterpiece, designed by renowned Architect Robert Vahlberg, is sited just outside McAlester, Oklahoma. The back of the house, including the master bedroom, faces east so each morning begins with the sunrise over a natural scene reminiscent of “Sherwood Forest”, complete with a babbling brook, pond, and wildlife that changes with the seasons. This house is an impressive structure lovingly designed to intertwine with the surrounding nature, sunlight, elevation, water, stone, and human presence. Award-winning architect Robert Vahlberg, a known admirer of Frank Lloyd Wright, designed the home with the same concern Wright expressed: “There must be a natural house—one that belongs to a hill as much as the trees or the rocks — and must lend a useful hand in revealing the fairness of the earth.” The home is sited on the brow of a hill, with its walls, windows, pillars, roofs, floors, and usable spaces creating a fully realized blend of nature and shelter. The sweeping views and open rooms capture the spirit of unity between man and nature — a visual metaphor that makes this house both restful and alive. Call Sandy Brock Bahe with questions or to view at: 918-470-4710 or Toll Free at 918-470-4710.

## Property Highlights

**Acreage:** 1.97

**Closest Town:** McAlester

**Access:** Paved City Road

**Taxes:** \$1,769.13

**Topography:** Rolling

**Improvements:** Home, Pool, Guest Quarters, Pond, Trees

**Bedrooms:** 4

**Baths:** 3.5

**Water:** Pond

**Wildlife:** Whitetail Deer and other indigenous wildlife

**Utilites:** Electric, Water, Septic

The information above is from sources deemed reliable, but we offer no warranty or representation regarding its accuracy. Seller(s), Accredited Land Brokers LLC, World Class Ranches, affiliated Brokerages, Brokers, Agents and/or Employees expressly disclaim any liability for errors, omissions or changes regarding any information provided for this property. Grass production and carrying capacity vary according to management practices. Water availability will vary by climatic conditions. Surface and Ground water usage may need State Permits. All maps are for illustration only. All offerings, pricing, and information are subject to change at anytime. Copyright 2005-2026 All Rights Reserved

**Sandy Brock Bahe**  
World Class Ranches Team Brokered by  
EXP Realty  
**918-470-4710**