



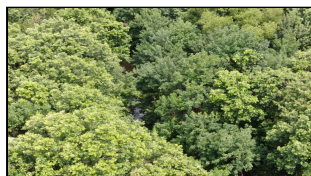
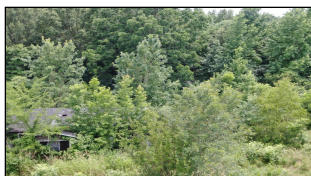
WorldClassRanches.com
Your Brand for Ranch & Trophy Properties

World Class Ranches Team Brokered by EXP Realty

320 E. Carl Albert Parkway, B1 | McAlester, OK 74501

Push Creek 13.33-A

\$83,312.50



This gorgeous 13.33 acres is located about one mile north of the Red River and about one-half mile from the Ouachita National Wildlife Refuge in McCurtain County, Oklahoma. Just ½ mile off the highway this property has so much to offer. A county road goes the full length of the northern boundary. Rural water and electricity is to the 912 sq. ft. two-bedroom, one bathroom cabin that sits back next to the trees. Push Creek runs the full width of the land just south of the cabin. Open pasture provides forage for cattle or wildlife that you may want to attract. The close proximity of the Wildlife Refuge opens up many opportunities to explore the great outdoors conveniently and at your leisure. The Ouachita National Forest covers nearly 1.8 million acres in central Arkansas and southeast Oklahoma. It is the oldest and largest National Forest in the Southern Region. When first established by President Theodore Roosevelt in 1907, it was named the Arkansas National Forest. President Calvin Coolidge renamed it to Ouachita in 1926. Ouachita (pronounced wash-i-tah) is the French spelling of a Native American word meaning "good hunting ground." Call Sandy Bahe at 918-470-4710 with questions or to view.

Property Highlights

Price Per Acre: \$6250.00

Acreage: 13.33 Acres

Closest Town: Idabel

Access: County Road

Topography: Flat

Improvements: 2 bedroom cabin, utilities

Home Sqft: 912

Bedrooms: 2

Baths: 1

Forage: Bermuda and Native grasses

Water: Push Creek

Wildlife: Deer, Turkey, and Other indigenous animals

Utilities: Rural water, electric, septic

The information above is from sources deemed reliable, but no warranty or representation is as to its accuracy by the Seller and WCR Land Brokers Marketing Network, LLC (WCR LBMN) and affiliated Brokers. Seller and WCR LBMN expressly disclaim any liability for errors, omissions or changes regarding any information provided for this property. Grass production and carrying capacity vary according to management practices. Water availability will vary by climatic conditions. Surface and Ground water usage may need State Permits. All maps are for illustration only. All offerings, pricing, and information are subject to change at anytime. Copyright 2005-2026 All Rights Reserved

Sandy Brock Bahe

World Class Ranches Team Brokered by
EXP Realty

918-470-4710