



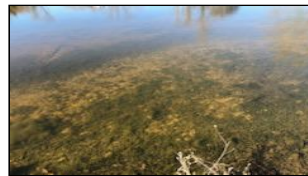
WorldClassRanches.com  
Your Brand for Ranch & Trophy Properties

# World Class Ranches Team Brokered by EXP Realty

320 E. Carl Albert Parkway, B1 | McAlester, OK 74501

**Cedar Creek Get Away 83 acres**

**\$460,000.00**



This beautiful and private 83.18-acre homestead property is sited just off a county road in northeast Texas. It features a 1344 square foot, two-bedroom two-bathroom, house with sunporch. The house has central heat and air, with an open kitchen/living/dining area and was built in 1999. Many huge Oak trees stand in the yard around the house, shop and barn. The insulated shop with electricity provides opportunity to pursue woodworking and other interests. A prepared path leads back to Cedar Creek which runs through the northwest part of the land. The creek area is scenic with large mature hardwood trees. Meander along the sandy banks in the cool shade of the trees and relax your cares away listening to the gentle breeze move through the trees. Enjoy countless hours fishing in the stocked pond, or just sit and enjoy nature. The property has flat to gently rolling terrain with many trails running through the property. Enjoy leisurely walks along the trails and encounter wildlife and nature in this quiet setting. Wildlife generally inhabiting the area include Whitetail Deer, Turkey, Squirrels, and other indigenous wildlife. If you enjoy hunting this property offers that opportunity. The sandy soils are conducive to gardening, growing fruit trees, and a variety of flowers and shrubs. Location from: Texarkana, TX –48 miles Dallas, TX –150 miles Paris, TX – 63 miles Shreveport, LA –110 miles Tyler, TX – 103 miles Sherman, TX – 129

## Property Highlights

**Price Per Acre:** \$5,530.00

**Acreage:** 83 Acres

**Location:** 150 mi. N of Dallas, & 48 W of Texarkana

**Closest Town:** De Kalb

**Access:** County Road

**Taxes:** \$2295.00/year

**Topography:** Flat to very gently rolling trees and grasses

**Improvements:** Home, barn, shop, fencing, pond.

**Bedrooms:** 2

**Baths:** 2

**Forage:** Bermuda, and native grasses

**Water:** Pond and Cedar Creek

**Wildlife:** Whitetail, turkey, squirrels and other

**Utilites:** Electricity, septic, well

The information above is from sources deemed reliable, but no warranty or representation is as to its accuracy by the Seller and WCR Land Brokers Marketing Network, LLC (WCR LBMN) and affiliated Brokers. Seller and WCR LBMN expressly disclaim any liability for errors, omissions or changes regarding any information provided for this property. Grass production and carrying capacity vary according to management practices. Water availability will vary by climatic conditions. Surface and Ground water usage may need State Permits. All maps are for illustration only. All offerings, pricing, and information are subject to change at anytime. Copyright 2005-2025 All Rights Reserved

**Sandy Brock Bahe**

World Class Ranches Team Brokered by  
EXP Realty

**918-470-4710**