



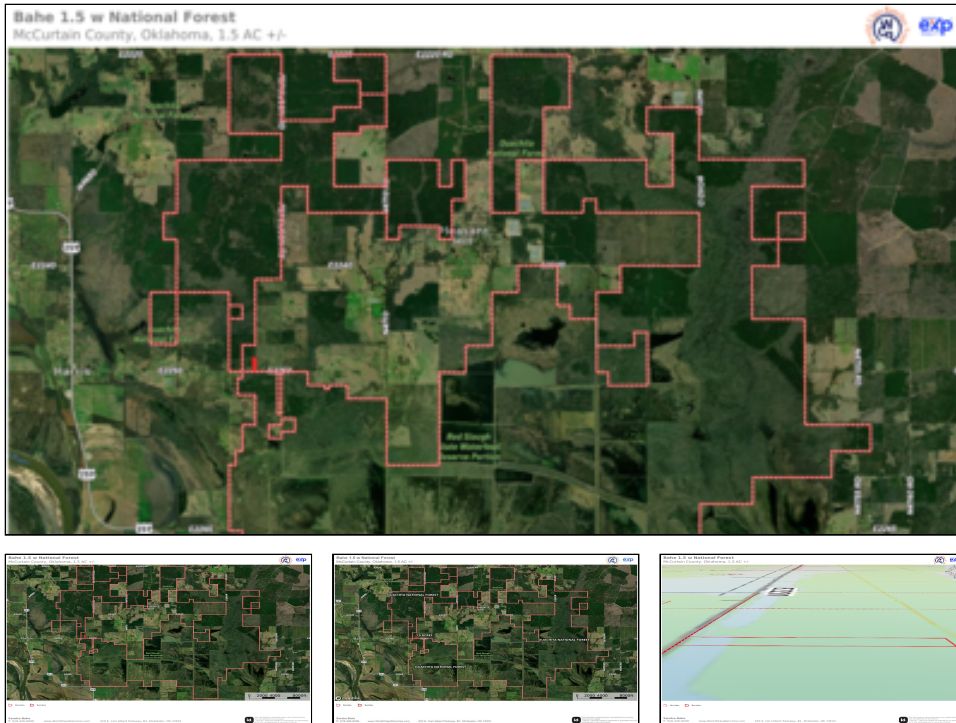
WorldClassRanches.com  
Your Brand for Ranch & Trophy Properties

# World Class Ranches Team Brokered by EXP Realty

320 E. Carl Albert Parkway, B1 | McAlester, OK 74501

**Wildlife 1.5 acres**

**\$18,995.00**



## Property Highlights

**Acreage:** 1.5 acres

**Location:** 163 Mi NE of Dallas, TX, 37 mi S of Hochatown

**Closest Town:** Idabel

**Access:** County Road

**Taxes:** \$15.77/year

**Topography:** Very gently rolling

**Forage:** Native grasses

**Wildlife:** Whitetail, Turkey, squirrels, etc.

**Utilities:** Electric and Rural Water nearby

This 1.5 acres is located in southeast McCurtain County, Oklahoma about 17 miles southeast of Idabel, Oklahoma and about 37 miles southeast of Hochatown, Oklahoma. The Ouachita National Forest lies across the county road to the south. The other adjoining landowners are private, but the National Forest does encircle this 1.5 acres and the immediate neighbors. Located less than three hours from the Dallas/Ft. Worth Metro area, the property is an easy commute that will put you in this area abounding with recreational opportunities. Taxes: \$15.77/year Utilities: Rural water lines and electricity are nearby. Area attractions: Sited in the foothills of southeastern Oklahoma, the Ouachita National Forest contains the beautiful Kiamichi Mountains and Beavers Bend State Park. Within the park is the 14,000-acre Broken Bow Lake which is 22 miles in length, beautifully nestled within the foothills with Pine timber lining the shorelines. The lake provides activities such as kayaking, boating, canoeing, swimming, skiing, fishing (including Trout below the dam), and other water sports. Relax and refresh at one of the many restaurants, gift shops, wine tasting venues, Beaver's Bend Mining Company, The Maze (a 29,000 sq. ft. outdoor wooden maze), Cedar Bluff Nature Trail, Forest Heritage Tree Trail along Beaver Creek, Forest Heritage Center, David Boren Hiking Trail (and many smaller trails), horseback riding, miniature golf, ziplining, and mountain biking.

The information above is from sources deemed reliable, but no warranty or representation is as to its accuracy by the Seller and WCR Land Brokers Marketing Network, LLC (WCR LBMN) and affiliated Brokers. Seller and WCR LBMN expressly disclaim any liability for errors, omissions or changes regarding any information provided for this property. Grass production and carrying capacity vary according to management practices. Water availability will vary by climatic conditions. Surface and Ground water usage may need State Permits. All maps are for illustration only. All offerings, pricing, and information are subject to change at anytime. Copyright 2005-2026 All Rights Reserved

**Sandy Brock Bahe**  
World Class Ranches Team Brokered by  
EXP Realty  
**918-470-4710**