



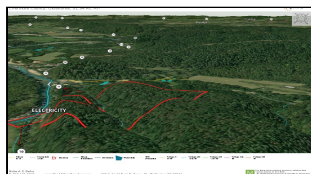
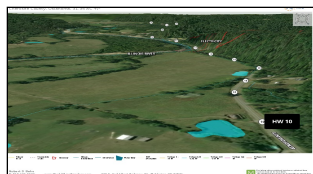
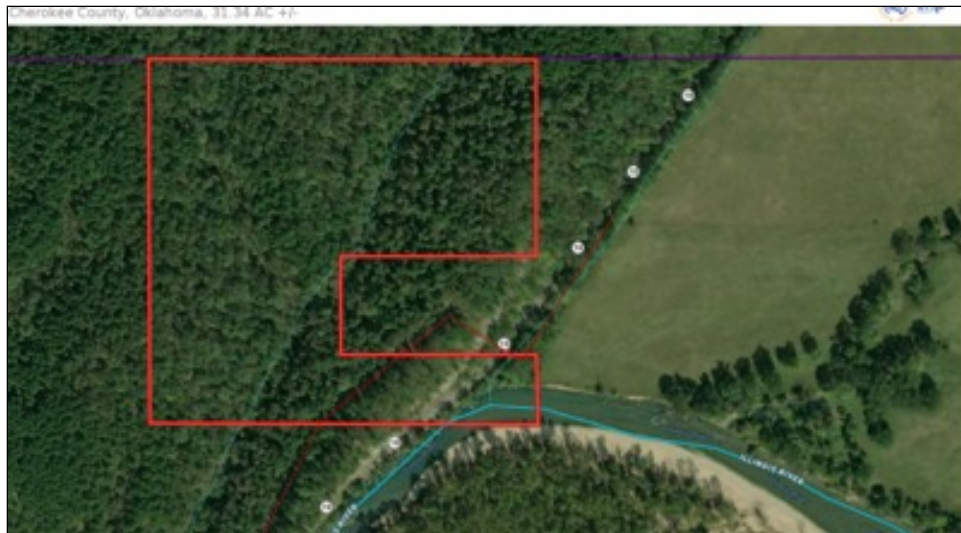
WorldClassRanches.com  
Your Brand for Ranch & Trophy Properties

# World Class Ranches Team Brokered by EXP Realty

320 E. Carl Albert Parkway, B1 | McAlester, OK 74501

**Illinois River Basin 32**

**\$63,968.00**



Cherokee County, Oklahoma As of the census[11] of 2000, there were 42,521 people, 16,175 households, and 11,079 families residing in the county. The population density was 57 people per square mile (22/km<sup>2</sup>). There were 19,499 housing units at an average density of 26 per square mile (10/km<sup>2</sup>). The racial makeup of the county was 56.41% White, 1.20% Black or African American, 32.42% Native American, 0.27% Asian, 0.04% Pacific Islander, 2.10% from other races, and 7.56% from two or more races. 4.14% of the population were Hispanic or Latino of any race. 92.7% spoke English, 3.8% Spanish and 2.7% Cherokee as their first language. There were 16,175 households, out of which 32.70% had children under the age of 18 living with them, 52.50% were married couples living together, 11.90% had a female householder with no husband present, and 31.50% were non-families. 25.30% of all households were made up of individuals, and 9.00% had someone living alone who was 65 years of age or older. The average household size was 2.52 and the average family size was 3.04.

## Property Highlights

**Price Per Acre:** 1,999.00

**Acreage:** 32

**Closest Town:** Tahlequah

**Access:** state highway 10

**Taxes:** \$minimal

**Topography:** Steep  
Mountainous

**Wildlife:** Deer and turkey

**Utilites:** Electric on property

The information above is from sources deemed reliable, but no warranty or representation is as to its accuracy by the Seller and WCR Land Brokers Marketing Network, LLC (WCR LBMN) and affiliated Brokers. Seller and WCR LBMN expressly disclaim any liability for errors, omissions or changes regarding any information provided for this property. Grass production and carrying capacity vary according to management practices. Water availability will vary by climatic conditions. Surface and Ground water usage may need State Permits. All maps are for illustration only. All offerings, pricing, and information are subject to change at anytime. Copyright 2005-2026 All Rights Reserved

**Robert D Bahe**

World Class Ranches Team Brokered by  
EXP Realty

**918-470-4711**